

### Show Rules

- All birds to be penned by 9.30am
  - Judging to commence at 10.00am prompt
  - Pen numbers will be available on the morning of the show
  - It is the exhibitor's responsibility to ensure their birds are fed and watered after judging has taken place
  - The committee reserves the right that if the judge is ill, or for any other reason cannot attend, to appoint another judge without prior notification to exhibitors
  - The committee reserves the right to amalgamate/segregate any classes with insufficient/sufficient entries in
  - Every care will be taken of the exhibits, but we cannot be held responsible for any loss or damage incurred before, during or after the show
  - The society cannot be held responsible for any personal injury occurred on the premises before, during or after the show
- \*THE BELOW ARE TO BE CONFIRMED ON THE DAY DUE TO STRICT TRAFFIC MOVEMENT ON THE SHOWGROUND\***
- Presentation of trophies will take place at approx. 4pm (Only fully paid up members are entitled to take trophies home)
  - Boxing at approximately 4.30pm

**COME ALONG AND ENJOY AN  
EXCELLENT AGRICULTURAL SHOW!  
"THERE'S SOMETHING FOR ALL THE  
FAMILY"**

# **System Fanciers Society**

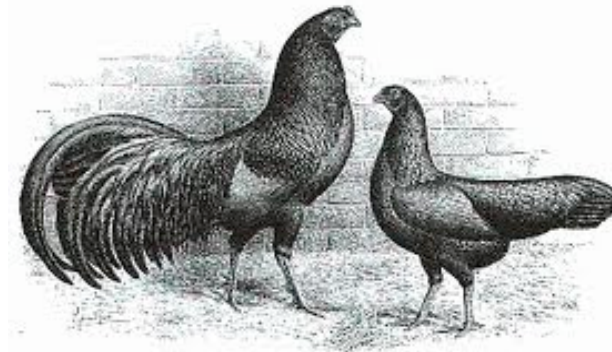
## **Summer Open Poultry Show**

Show to be held on **Sunday 15<sup>th</sup> July 2018** at  
**Ashby de la Zouch Agricultural Show**

Judge(s) for the day will be: Mr Andrew Robinson

Entries close: Monday 2<sup>nd</sup> July 2018  
**No late entries accepted**

**All entries to be sent with correct fees to:  
Mr S S Patel, 23 Tristram Close, Leicester Forest East,  
Leicester, LE3 3RP Tel: 07826 525810  
Show Enquiries - Mr K A Brown 01827 898691**



Membership £3.00

Entry fees: **Members £1.75 per Bird / £1.00 Eggs**  
**Non-Members £2.00 per Bird/ £1.25 Eggs**

*“Entries totalling £8 or more will receive 1 free admission pass to the showground*

*Entries to the value of £15 or more will receive 2 free admission passes to the showground.”*

**“Please include a SAE so passes can be posted out prior to Show”**

Cheques to be made payable to: Syston Fanciers Society

Show Address; Ashby Agricultural Show, **Cattows Farm**, Normanton Lane, Heather, Leicestershire, LE67 2TD

**Trophies**; Best in Show, Reserve Best in Show, Best Bantam Soft Feather, Best True Bantam, Best Hard Feather, Best Eggs, Best Juvenile Exhibit, Best Dutch



### **Waterfowl**

93. White Call Drake
94. White Call Duck
95. Any Colour Call Drake
96. Any Colour Call Duck
97. Any Variety Bantam Drake/Duck
98. Rouen Drake/Duck
99. Pekin Drake/Duck
100. Indian Runner Drake
101. Indian Runner Duck
102. Any Other Variety Drake / Duck

### **Egg Classes**

103. 6 Large AC
104. 3 Large Brown
105. 3 Large White
106. 3 Large Different Colours
107. 3 Large AOC
108. 1 Large Supreme
109. 6 Bantam AC
110. 3 Bantam Brown
111. 3 Bantam White
112. 3 Bantam Different Colours
113. 3 Bantam AOC
114. 1 Bantam Supreme
115. 1 Large Contents
116. 1 Bantam Contents

### True Bantam Classes

71. Belgian D'Anvers	M
72. Belgian D'Anvers	F
73. Belgian D'Uccle	M/F
74. AOV Belgian	M/F
75. Japanese AC	M/F
76. Pekin Black	M/F
77. Pekin White	M/F
78. Pekin AOC	M/F
79. Rosecomb AC	M/F
80. Sebright AC	M/F
81. Serama	M
82. Serama	F
83. Silkied Serama	M
84. Silkied Serama	F
85. Gold Partridge Dutch	M
86. Gold Partridge Dutch	F
87. Silver Partridge Dutch	M/F
88. Yellow Partridge Dutch	M/F
89. AOC Dutch	M/F
89a. AOV True Bantam (inc. Rare Trues)	M/F

### Juvenile Classes (16 and under)

90. Any Variety Hard Feather	M/F
91. Any Variety Soft Feather	M/F
92. Any Variety True Bantam	M/F

**(Please state whether LARGE or BANTAM on Entry Form)**

### Large Hard Feather Classes

1. OEG Carlisle Type	M/F
2. OEG Oxford A.C.	M/F
3. Any Variety Hard Feather Rare Breed	M/F
4. AOV Hard Feather	M/F
5. Any Variety Asiatic Game	M/F

### Large Soft Feather Classes

6. Ancona	M/F
7. Australorp	M/F
8. Derbyshire Red Cap	M/F
9. Faverolle AC	M/F
10. Leghorn	M/F
11. New Hampshire Red	M/F
12. Orpington Buff	M/F
13. Orpington AOC	M/F
14. Poland	M/F
15. Russian Orloff	M/F
16. Silkie White	M/F
17. Silkie AOC	M/F
18. Sussex AC	M/F
19. Welsummer	M/F
20. Wyandotte Laced/Pencilled	M/F
21. Wyandotte AC	M/F
22. Any Variety Rare Breed	M/F
23. AOV Large Soft Feather	M/F

**Bantam Hard Feather Classes**

24. Indian or Jubilee Game	M/F
25. Modern Game Brown Red or Birchen	M/F
26. Modern Game Black Red or Duckwing	M/F
27. Modern Game AOC	M/F
28. Any Variety Asiatic Game	M/F
29. Any Variety Hard Feather	M/F
30. Any Variety Rare Breed Hard Feather	M/F

**Bantam Old English Game Classes**

31. OEG Self Black or Blue	M
32. OEG Self Black or Blue	F
33. OEG Black Red	M
34. OEG Wheaten	F
35. OEG Furnace or Brassy, Black/Blue	M
36. OEG Furnace, Polecat or Salmon Blue	F
37. OEG Spangled	M
38. OEG Spangled	F
39. OEG AOC	M
40. OEG AOC	F

**Bantam Soft Feather Heavy Classes**

41. Australorp	M/F
42. Derbyshire Red Cap	M/F
43. Faverolle AC	M/F
44. German Langshan AC	M/F
45. Light Sussex	M/F
46. Sussex AOC	M/F
47. New Hampshire Red	M/F
48. Orpington AC	M/F
49. Plymouth Rock – Buff	M/F

**Bantam Soft Feather Heavy Classes cont.**

50. Plymouth Rock AOC	M/F
51. Rhode Island Red	M/F
52. Wyandotte Laced/Pencilled	M/F
53. Wyandotte AOC	M/F
54. AOV Heavy Breed	M/F
55. AOV Feather Legged Heavy Breed	M/F
56. AV Soft Feather Heavy Rare Breed	M/F

**Bantam Soft Feather Light Classes**

57. Ancona	M/F
58. Araucana	M/F
59. Hamburgh Silver Spangled	M/F
60. Hamburgh AOC	M
61. Hamburgh AOC	F
62. Leghorn	M/F
63. Minorca	M/F
64. Poland	M/F
65. Silkie White	M/F
66. Silkie AOC	M/F
67. Welsummer	M/F
68. AOV Light Breed	M/F
69. AOV Feather Legged Light Breed	M/F
70. AV Soft Feather Light Rare Breed	M/F

**Continued...**